

**BALDOR® • RELIANCE** 

**Product Information Packet**

**IDXM7010**

**.75HP,1750RPM,3PH,60HZ,56C,3516M,XPFC,F1**

| Part Detail |        |             |            |             |        |               |            |
|-------------|--------|-------------|------------|-------------|--------|---------------|------------|
| Revision:   | W      | Status:     | PRD/A      | Change #:   |        | Proprietary:  | No         |
| Type:       | AC     | Elec. Spec: | 35WGP667   | CD Diagram: | CD0005 | Mfg Plant:    |            |
| Mech. Spec: | 35M998 | Layout:     | 35LYM998   | Poles:      | 04     | Created Date: | 01-14-2008 |
| Base:       | RG     | Eff. Date:  | 05-05-2020 | Leads:      | 9#18   |               |            |

| Specs                           |                         |                                |                 |
|---------------------------------|-------------------------|--------------------------------|-----------------|
| Catalog Number:                 | IDXM7010                | Insulation Class:              | F               |
| Enclosure:                      | XPFC                    | Inverter Code:                 | Inverter Duty   |
| Frame:                          | 56C                     | KVA Code:                      | M               |
| Frame Material:                 | Steel                   | Lifting Lugs:                  | No Lifting Lugs |
| Output @ Frequency:             | .750 HP @ 60 HZ         | Locked Bearing Indicator:      | Locked Bearing  |
| Synchronous Speed @ Frequency:  | 1800 RPM @ 60 HZ        | Motor Lead Quantity/Wire Size: | 9 @ 18 AWG      |
| Voltage @ Frequency:            | 460.0 V @ 60 HZ         | Motor Lead Exit:               | Ko Box          |
|                                 | 230.0 V @ 60 HZ         | Motor Lead Termination:        | Flying Leads    |
| XP Class and Group:             | CLI GP D; CLII GP F,G   | Motor Type:                    | X3516M          |
| XP Division:                    | Division I              | Mounting Arrangement:          | F1              |
| Agency Approvals:               | CSA                     | Power Factor:                  | 73              |
|                                 | UL                      | Product Family:                | General Purpose |
|                                 | UR                      | Pulley End Bearing Type:       | Ball            |
| Auxillary Box:                  | No Auxillary Box        | Pulley Face Code:              | C-Face          |
| Auxillary Box Lead Termination: | None                    | Pulley Shaft Indicator:        | Standard        |
| Base Indicator:                 | Rigid                   | Rodent Screen:                 | None            |
| Bearing Grease Type:            | Polyrex EM (-20F +300F) | RoHS Status:                   | ROHS COMPLIANT  |
| Blower:                         | None                    | Shaft Extension Location:      | Pulley End      |

|                                       |                           |                                    |                            |
|---------------------------------------|---------------------------|------------------------------------|----------------------------|
| <b>Constant Torque Speed Range:</b>   | 6                         | <b>Shaft Ground Indicator:</b>     | No Shaft Grounding         |
| <b>Current @ Voltage:</b>             | 1.100 A @ 460.0 V         | <b>Shaft Rotation:</b>             | Reversible                 |
|                                       | 2.200 A @ 230.0 V         | <b>Shaft Slinger Indicator:</b>    | No Slinger                 |
| <b>Design Code:</b>                   | B                         | <b>Speed Code:</b>                 | Single Speed               |
| <b>Drip Cover:</b>                    | No Drip Cover             | <b>Motor Standards:</b>            | NEMA                       |
| <b>Duty Rating:</b>                   | CONT                      | <b>Starting Method:</b>            | Direct on line             |
| <b>Electrically Isolated Bearing:</b> | Not Electrically Isolated | <b>Thermal Device - Bearing:</b>   | None                       |
| <b>Feedback Device:</b>               | NO FEEDBACK               | <b>Thermal Device - Winding:</b>   | Normally Closed Thermostat |
| <b>Front Face Code:</b>               | Standard                  | <b>Vibration Sensor Indicator:</b> | No Vibration Sensor        |
| <b>Front Shaft Indicator:</b>         | None                      | <b>Winding Thermal 1:</b>          | None                       |
| <b>Heater Indicator:</b>              | No Heater                 | <b>Winding Thermal 2:</b>          | None                       |
|                                       |                           | <b>XP Temp Code:</b>               | T3C                        |

| Nameplate NP0887XPSL |              |        |              |       |            |          |          |    |  |
|----------------------|--------------|--------|--------------|-------|------------|----------|----------|----|--|
| NO.                  |              |        |              |       | CC         |          |          |    |  |
| S/N                  |              |        |              |       | TEMP CODE  | T3C      |          |    |  |
| SPEC.                | 35M998P667G1 |        |              |       | INV.TYPE   | PWM      |          |    |  |
| CAT.NO.              | IDXM7010     |        |              |       | C HP FR    | 60       | C HP TO  | 90 |  |
| HP                   | .75          |        |              |       | CT HZ FROM | 6        | CT HZ TO | 60 |  |
| VOLTS                | 230/460      |        |              |       | VT HZ FROM | 6        | VT HZ TO | 60 |  |
| AMPS                 | 2.2/1.1      |        |              |       | MAG CUR    | 1.5/.75  |          |    |  |
| RPM                  | 1750         |        |              |       | MX RPM     | 2700     |          |    |  |
| HZ                   | 60           | PH     | 3            | CL    | F          | NOM.EFF. | 84       |    |  |
| SER.F.               | 1.00         | DES    | B            | SL HZ | 2          | WK2      | 0.946    |    |  |
| FRAME                | 56C          | RATING | 40C AMB-CONT |       |            |          |          |    |  |
|                      |              |        |              |       |            |          |          |    |  |
|                      |              |        |              |       |            |          |          |    |  |
|                      |              |        |              |       |            |          |          |    |  |

| Parts List    |  |          |
|---------------|--|----------|
| Part Number   | Description                              | Quantity |
| SA167076      | SA 35M998P667G1                          | 1.000 EA |
| RA155425      | RA 35M998P667G1                          | 1.000 EA |
| 34FN3002B01   | EXTERNAL FAN, PLASTIC, .637/.639 HUB W/  | 1.000 EA |
| 35CB3001A01SP | EXPL CONDUIT BOX, MACH, 1/2" PIPE TAP LE | 1.000 EA |
| 11XW0832G06   | #8-32 X 3/8, TAPTITE II, HEX WSHR SLTD   | 1.000 EA |
| HW3001B01     | BRASS CUP WASHER, FOR #10 SCREW          | 1.000 EA |
| 35EP3700A01SP | FR ENDPLATE, XPFC                        | 1.000 EA |
| HW5100A03     | WAVY WASHER (W1543-017)                  | 1.000 EA |
| 35EP3702A01SP | PU EP-205 BRG-35X-56C-143-5TC            | 1.000 EA |
| 84XN1032J20   | SCREW, SOC 10-32 X 1 1/4"BMH4602         | 2.000 EA |
| HA3013A01     | 1/2-20X5/8 SPL.HX BOLT                   | 2.000 EA |
| HW3021C06     | 3/32 DI X .625 PIN (F/S)                 | 2.000 EA |
| XY3118A12     | 5/16-18 HEX NUT DIRECTIONAL SERRATION    | 4.000 EA |
| 51XB1214A16   | 12-14X1.00 HXWSSLD SERTYB                | 1.000 EA |
| 35FH4005A01SP | IEC FH NO GREASER W/PRIMED               | 1.000 EA |
| 51XW1032A06   | 10-32 X .38, TAPTITE II, HEX WSHR SLTD S | 3.000 EA |
| 35CB3500A01SP | CONDUIT BOX LID, MACH                    | 1.000 EA |
| 51XN2520A16   | SCREW, HEX WS SLT, ZN, 1/4-20 X 1.00     | 4.000 EA |
| HW2501D13     | KEY, 3/16 SQ X 1.375                     | 1.000 EA |
| HA7000A04     | KEY RETAINER 0.625 DIA SHAFTS            | 1.000 EA |
| 85XU0407S04   | 4X1/4 U DRIVE PIN STAINLESS              | 8.000 EA |
| NP0018F       | ALUM UL XP CONDUIT BOX NAMEPLATE         | 1.000 EA |
| MJ1000A02     | GREASE, MOBIL POLYREX EM - 124047        | 0.050 LB |
| MG1025G29     | WILKOFAS, 789.229, DARK CHARCOAL GRAY    | 0.017 GA |

| <b>Parts List (continued)</b> |  |                 |
|-------------------------------|--|-----------------|
| <b>Part Number</b>            | <b>Description</b>                       | <b>Quantity</b> |
| HA3104A06                     | THRUBOLT 5/16-18 X 8.50 OHIO ROD         | 4.000 EA        |
| LB1119N                       | WARNING LABEL                            | 1.000 EA        |
| LC0145B01                     | CONNECTION LABEL                         | 1.000 EA        |
| NP0887XPSL                    | SS XP INV UL CSA CC CL-I GP-D CL-II GP-F | 1.000 EA        |
| 36PA1000                      | PKG GRP, PRINT PK1016A06                 | 1.000 EA        |
| MN416A01                      | TAG-INSTAL-MAINT no wire (1200/bx) 3/19  | 1.000 EA        |

AC Induction Motor Performance Data

Page 1 of 1



**AC Induction Motor Performance Data**

Record # 31850

Typical performance - not guaranteed values

|                          |                    |                        |
|--------------------------|--------------------|------------------------|
| <b>Winding:</b> 35WGP667 | <b>Type:</b> 3517M | <b>Enclosure:</b> XPFC |
|--------------------------|--------------------|------------------------|

| Nameplate Data    |              |          | General Characteristics at 460 V, 60 Hz:<br>High Volt Connection |            |  |
|-------------------|--------------|----------|--|------------|--|
| Rated Output (HP) | .75          |          | Full Load Torque   | 2.22 LB-FT |  |
| Volts             | 230/460      |          | Start Configuration  | DOL        |  |
| Full Load Amps    | 2.2/1.1      |          | Break Down Torque  | 10.5 LB-FT |  |
| R.P.M.            | 1750         |          | Pull-Up Torque   | 6.26 LB-FT |  |
| Hz                | 60           | Phase    | Locked-rotor Torque  | 7.48 LB-FT |  |
| NEMA Design Code  | B            | KVA Code | Starting Current   | 9.7 Amps   |  |
| Service Factor    | 1            |          | No-load Current  | 0.752 Amps |  |
| NEMA Nom. Eff.    | 84           | P.F.     | Line-line Res. @ 25°C.   | 23.3 Ohms  |  |
| Rating - Duty     | 40C AMB-CONT |          | Temp. Rise @ Rated Load  | 30°C       |  |
| S.F. Amps         |              |          | Temp. Rise @ S.F. Load   |            |  |

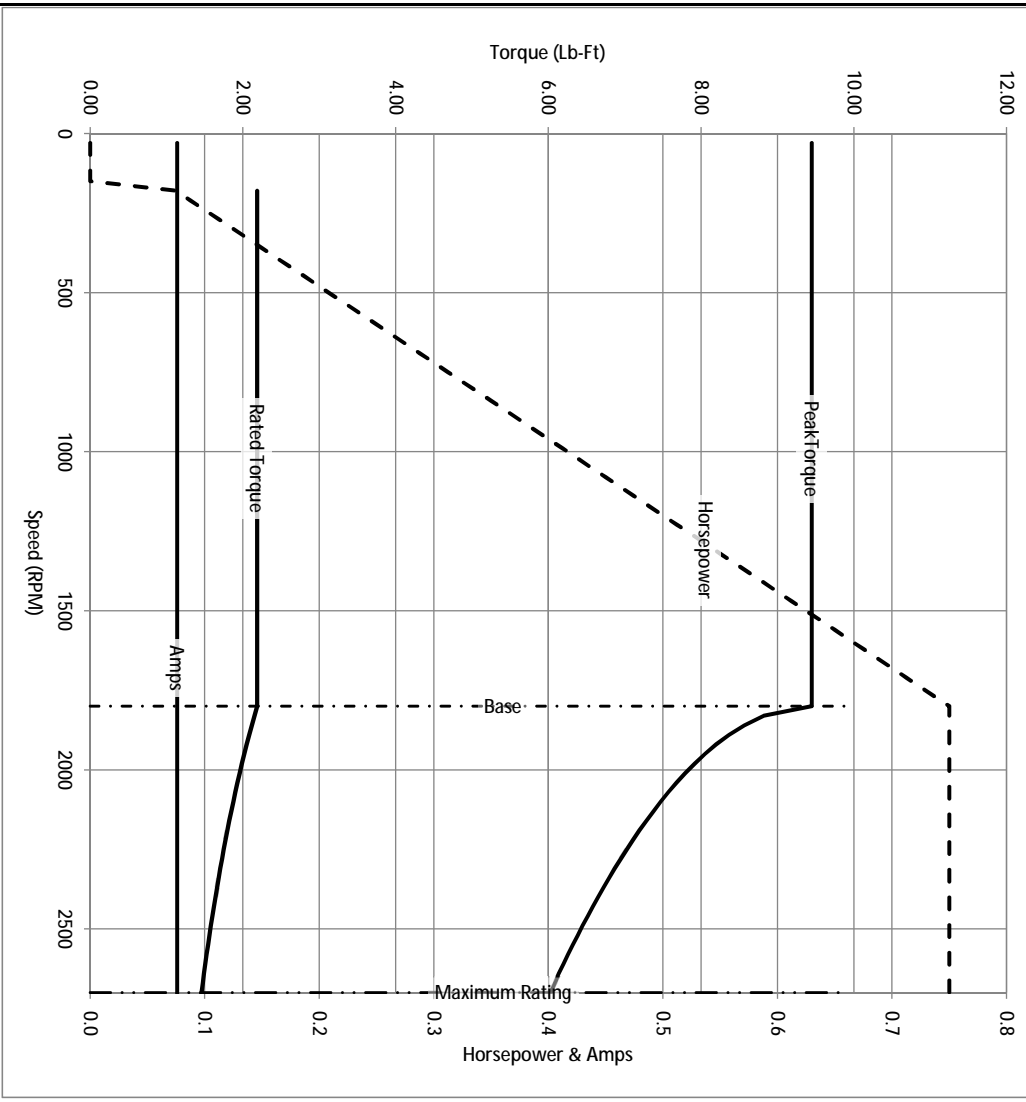
Load Characteristics at 460 Volts, 60 Hz, 0.75 HP

| % of Rated Load | 25    | 50   | 75    | 100  | 125  | 150  | S.F. |
|-----------------|-------|------|-------|------|------|------|------|
| Power Factor    | 32    | 50   | 64    | 73   | 80   | 83   |      |
| Efficiency      | 71.4  | 80.9 | 83.8  | 84.4 | 84   | 82.7 |      |
| Speed           | 1790  | 1778 | 1765  | 1752 | 1738 | 1721 |      |
| Line Amperes    | 0.787 | 0.87 | 0.992 | 1.14 | 1.32 | 1.54 |      |

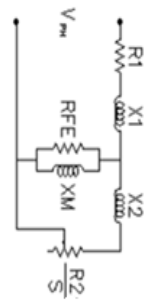
Baldor Electric Company Fort Smith, Arkansas



|            |          |                         |         |                                       |      |   |
|------------|----------|-------------------------|---------|---------------------------------------|------|---|
| Catalog    | IDXM7010 | NP VOLTS                | 230/460 | ENCLOSURE                             | XPFC | WVE CONN EQ CRT OHMS PER PHASE (BASE RATING, 20C) |
| FRAME      | 56C      | NP AMPS                 | 2.2/1.1 | Base Volts                            | 460  | R1 11.500   |
| HP         | 0.75 HP  | DUTY                    | Cont    | Base AMPS                             | 1.14 | R2 6.690  |
| BASE SPEED | 1800     | MAX SAFE RPM            | 2700    | Slip Hz                               | 1.60 | XM1   |
| PHASE/HZ   | 3/60     | AMB <sup>0</sup> /INSUL | 40/F    | WK <sup>2</sup> (lb-ft <sup>2</sup> ) | 0.1  | X2 8.807  |
|            |          |                         |         |                                       |      | 333.381   |



Remarks: Calculated Data



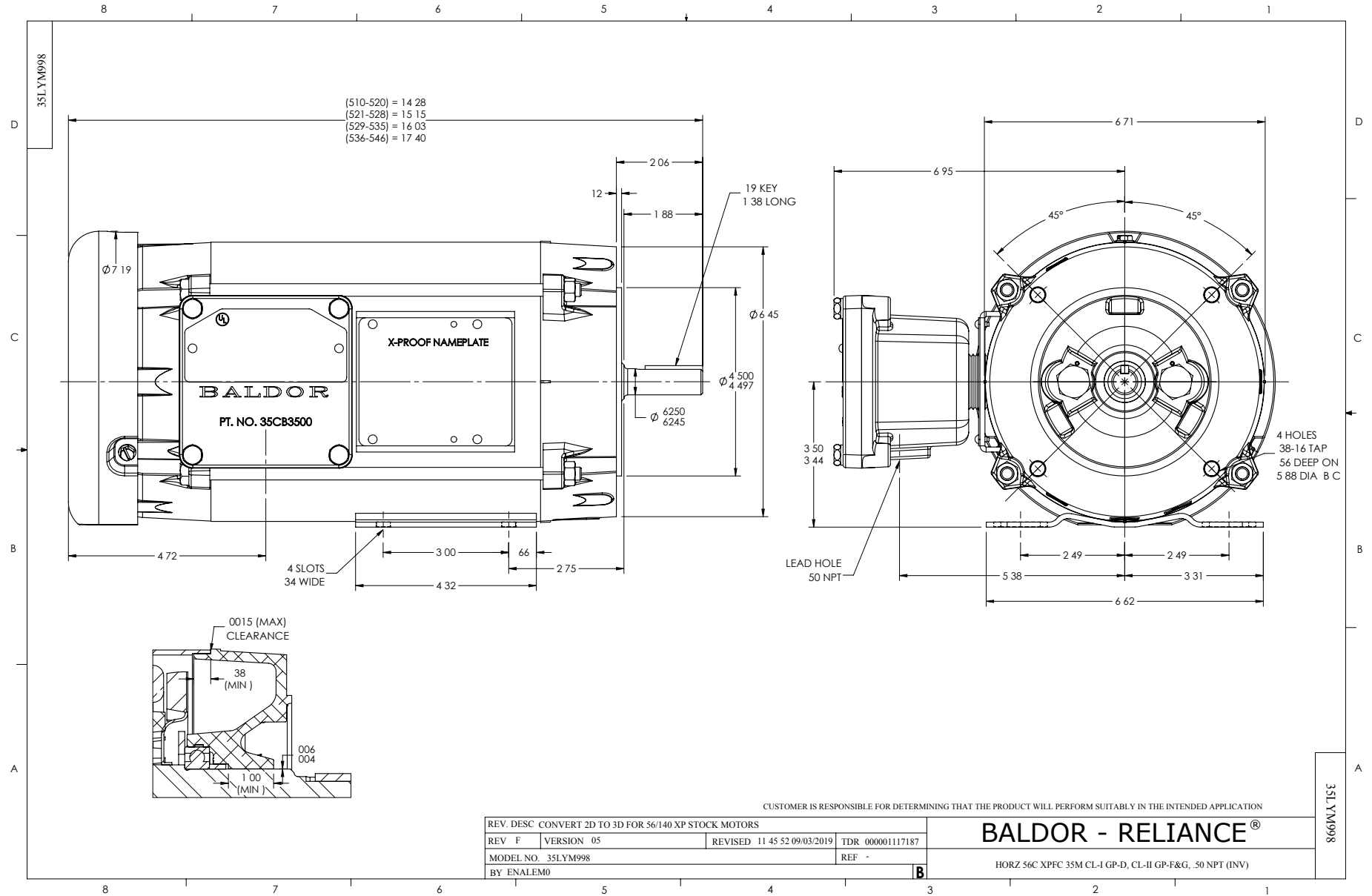
**BALDOR** DR BY ENR  
 CK BY  
 APP BY ENR  
 DATE 3/6/2013

**35M998P67G1**

A-C MOTOR  
 PERFORMANCE CURVES

ISSUE DATE 3/6/2013

A MEMBER OF THE ABB GROUP



CD0005

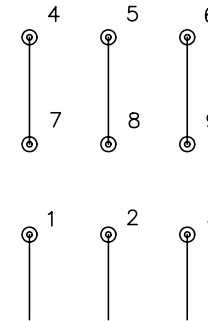


LOW VOLTAGE  
(2Y)



LINE

HIGH VOLTAGE  
(1Y)



LINE

NOTES:

1. INTERCHANGE ANY TWO LINE LEADS TO REVERSE ROTATION.
2. OPTIONAL THERMOSTATS ARE PROVIDED WHEN SPECIFIED.
3. ACTUAL NUMBER OF INTERNAL PARALLEL CIRCUITS MAY BE A MULTIPLE OF THOSE SHOWN ABOVE.
4. LEAD COLORS ARE OPTIONAL. LEADS MUST ALWAYS BE NUMBERED AS SHOWN.

|   |         |                         |              |
|---|---------|-------------------------|--------------|
| REV. DESC: REVISE TO SHOW OPTIONAL COLORS |         |                         |              |
| REV. LTR: E                               | BY: JLP | REVISED: 01/19/99 10:15 | TDR: 0171435 |
| 9000D                                     |         | FILE: AAA00005140       | MDL: -       |
|   |         | MTL: -                  |              |

**BALDOR ELECTRIC Co.**

3PH, DV, 9 LEADS

CD0005